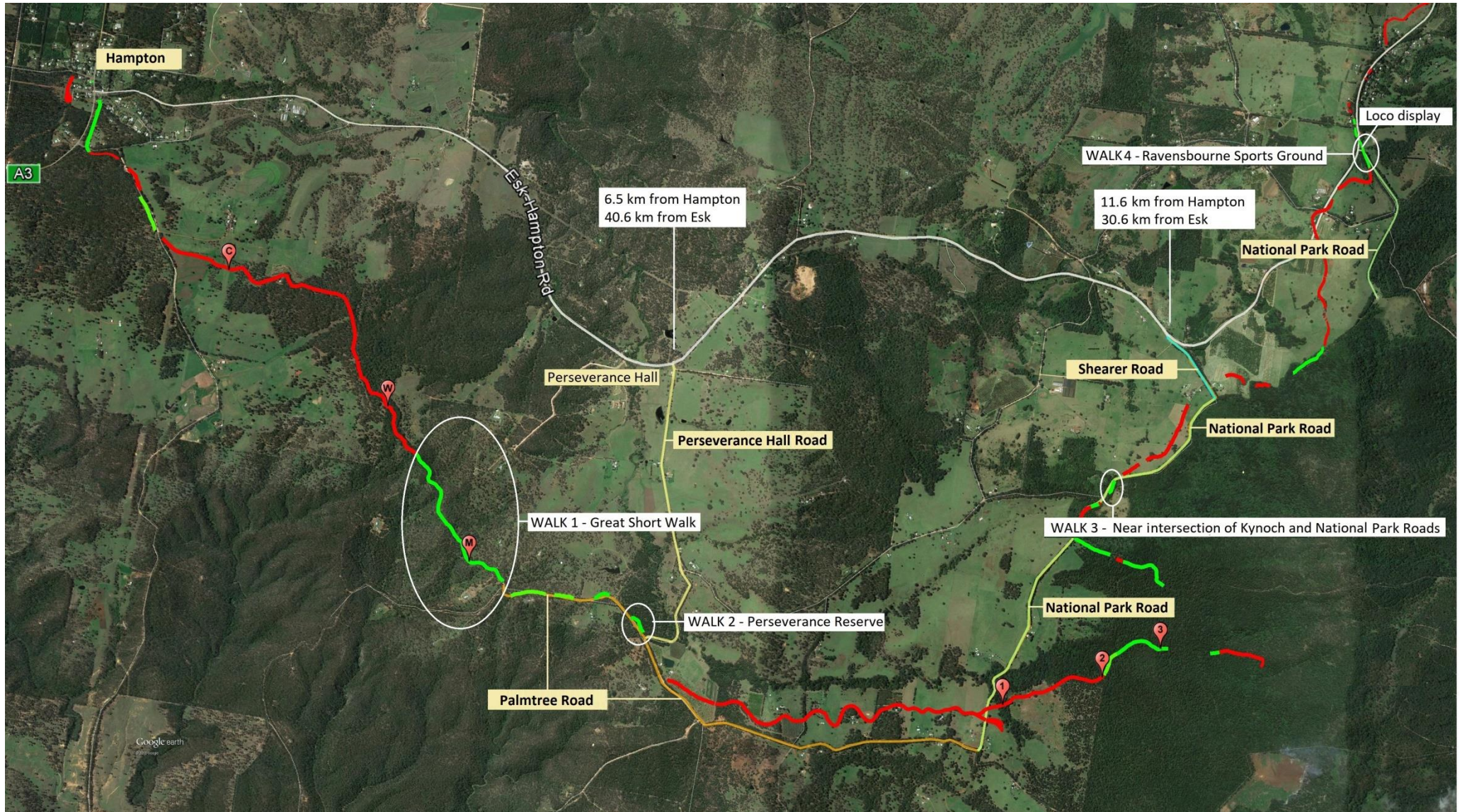
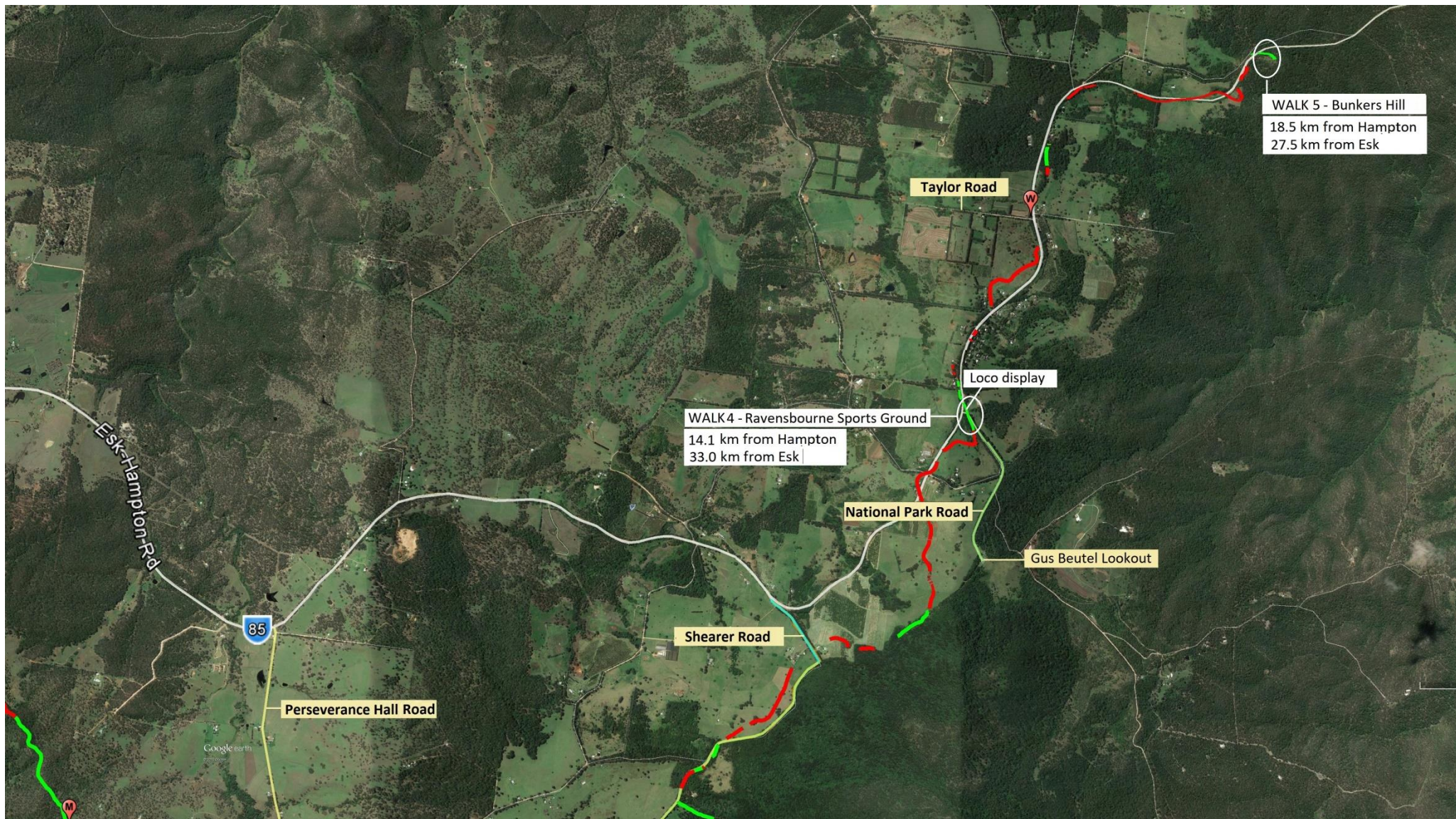


ROAD MAP

The two Google Earth images below are intended to provide an overview of the roads that provide access to the 5 walking sites. For those considering a “drive through”, starting at Walk 1 is suggested as it is the longest of the walks and probably best visited while fresh. As shown on the first Google Earth image below, it is then possible to drive from Walk 1 to Walk 2 to Walk 3 along Palmtree and National Park Roads and to then continue on via Shearer and the Esk-Hampton Roads to Walks 4 and 5. Palmtree Road, National Park Road and Shearer Road involves travelling on dirt roads, those roads are generally in good order and suitable for 2WD or 4WD vehicles.





WALK 5 - Bunkers Hill
18.5 km from Hampton
27.5 km from Esk

Taylor Road

Loco display

WALK 4 - Ravensbourne Sports Ground
14.1 km from Hampton
33.0 km from Esk

National Park Road

Gus Beutel Lookout

Shearer Road

Perseverance Hall Road

85